

Alto Trombone

Missa S. Amandi

Johann Georg Zechner (1716 - 1778)

Kyrie

Adagio



5



9 Allegro

13



27



34



43



50



56



61 *Andante*

Adagio

43



107 *Presto*

3



114



118



123



128



131



135



139



Gloria

Presto
10



15

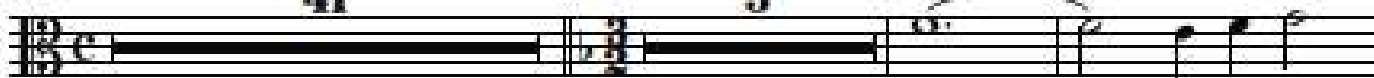


20 **Andante**

Adagio

41

3



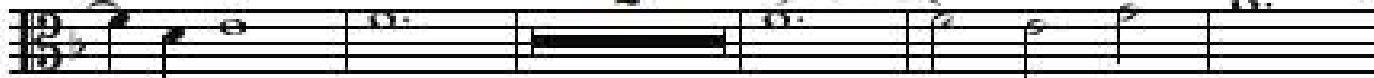
66



71

tr

2



pp

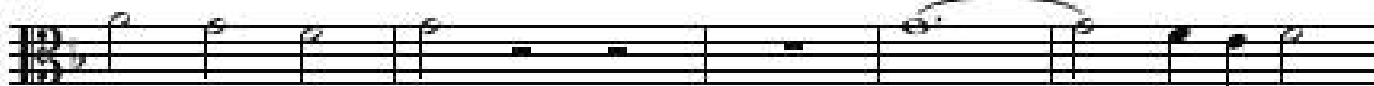
78



82



86

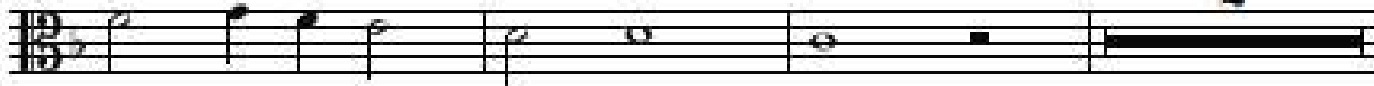


f

91

tr

2



96

Musical staff 96, starting with a piano (*pp*) dynamic marking. The staff contains a sequence of notes and rests.

101

Musical staff 101, featuring a melodic line with a slur over the latter half.

106

Musical staff 106, including a fermata and a forte (*f*) dynamic marking.

112

Musical staff 112, featuring a trill (*tr*) over the final note.

117

Musical staff 117, ending with a trill (*tr*) and a double bar line.

121 **Allegro**

Musical staff 121, marked **Allegro**, showing a more rhythmic passage.

126

Musical staff 126, continuing the rhythmic passage with slurs.

131

Musical staff 131, featuring a melodic line with slurs.

135

Musical staff 135, ending with a fermata and a measure rest of 25 measures.

162 **Adagio staccato**
3

171

180

195

201

207 **Allegro** 43 **Allegro**

253

259

265

270

276



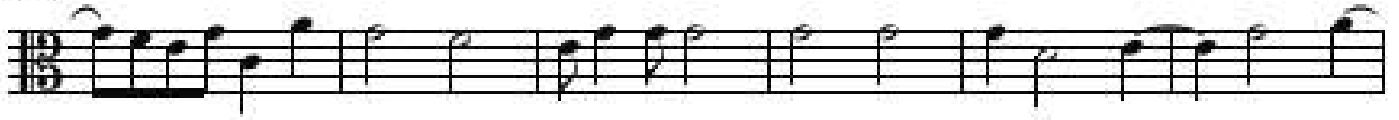
281



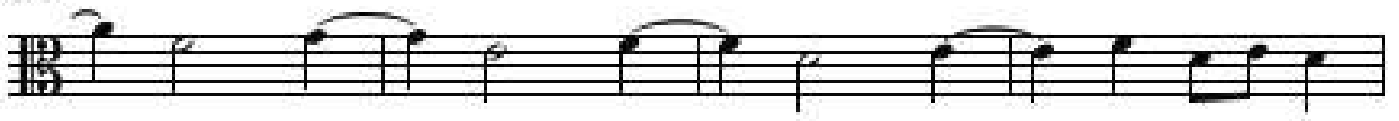
286



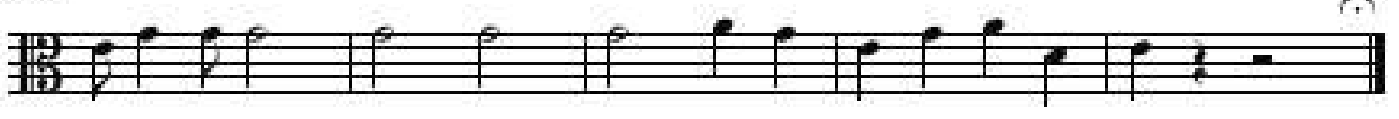
291



297



301



Aus einer Abschrift im Archiv des Stiftes Göttweig übertragen von Peter Unger (spartiert 2017/18).

Generalbassaussetzung Franz Zebinger.

Ausgabe Jänner 2025

Credo

Allegro

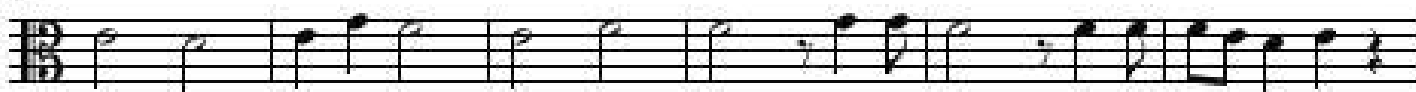
11



16



22



28

15

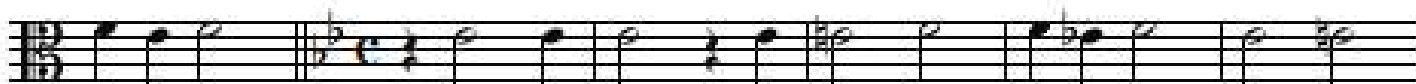


46

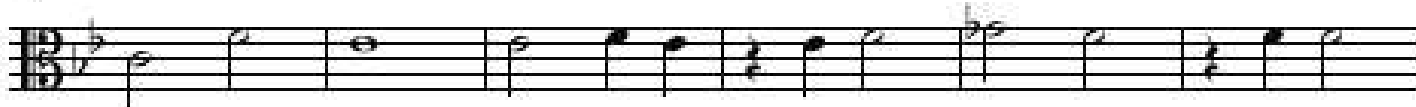


51

Adagio



57



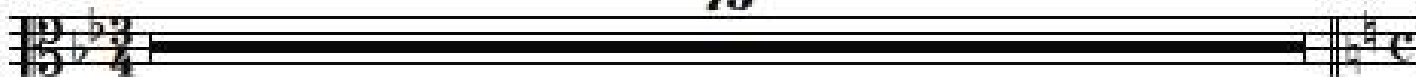
63



68

Adagio

75



Allegro

143



148



153



158



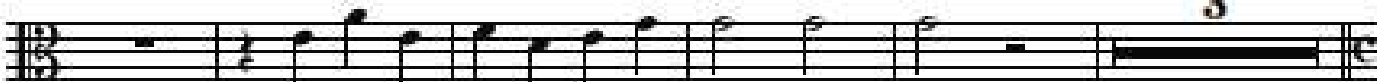
164



173



185



193 **Allegro**



198



203



Sanctus

Adagio

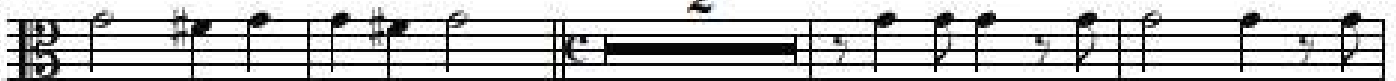
7



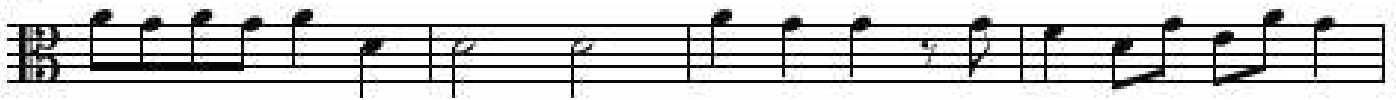
13

Allegro

2



19



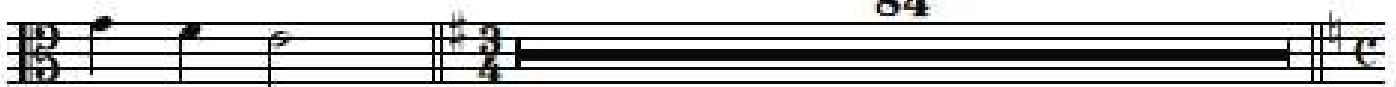
23



26

Andante

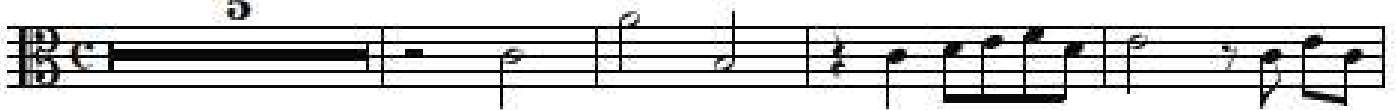
84



111

Presto

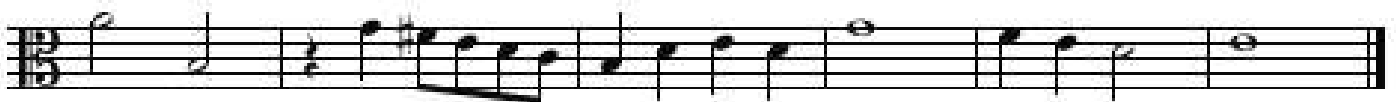
5



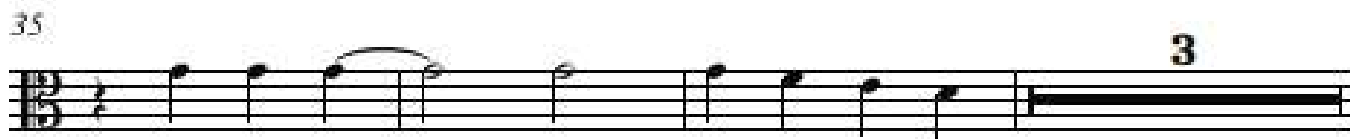
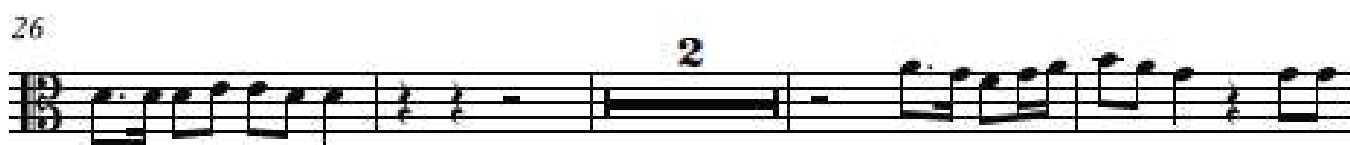
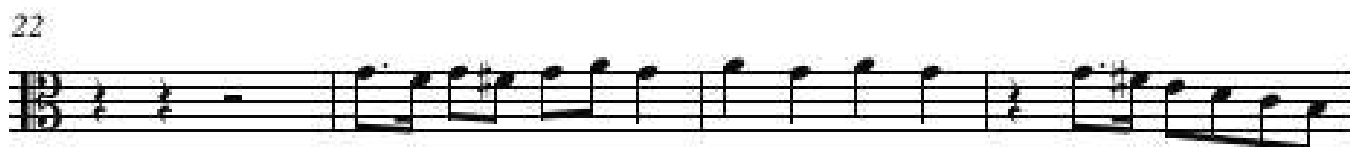
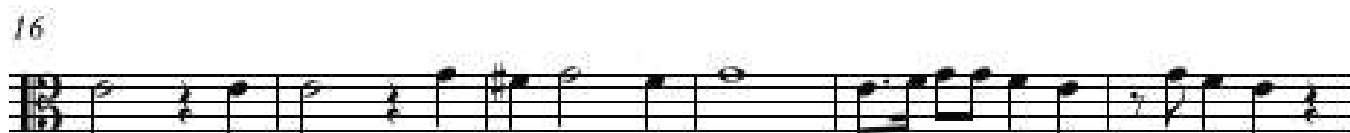
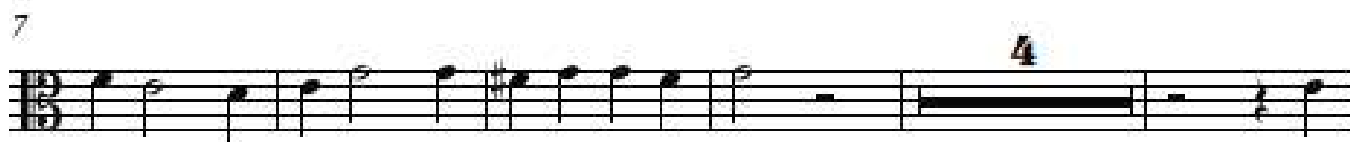
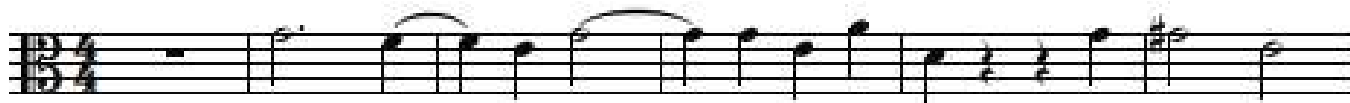
120



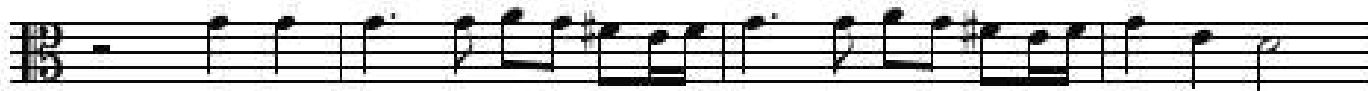
125



Agnus Dei



41



45



49



54



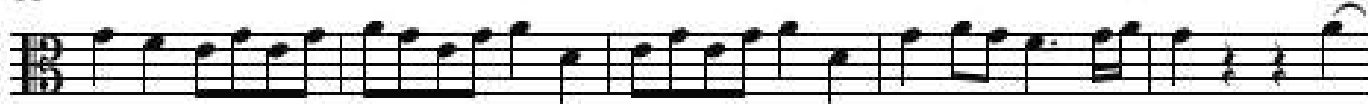
59



62



66



71

